

Nuria Fuentes-Peláez

nuriafuentes@ub.edu

20. 11 . 2019

Knowing children's and families' experiences to improve practice: from Children's placement out of the home to family reunification

Presentation

The biological family in the child welfare system: educational processes" (EDU2011-30144-C02-01 2012 – 2014). PI: Balsells & Pastor

The family reunification as a challenge of the child protection system (EDU2014-52921-C2)

Socio-educative program for family reunification: Good Practices to promote children and family participation (EDU2014-52921-C2-1-R) PI: Balsells, M.A.

Socio-educative program for family reunification: : evaluation, implementation and development of a group intervention model (EDU2014-52921-C2-2-R) PI: Pastor & Fuentes-Peláez

A Socio-educative intervention model to family reunification in the child protection system (RTI2018-099305-B-C21)

Strategies and resources to promote family participation in the development of competencies (RTI2018-099305-B-C2) PI: Balsells, M.A.

Keys for the articulations of socio-educatives programs in the process of foster care and family reunification (RTI2018-099305-B-C22) PI: Fuentes-Peláez, N.



UNIVERSITAT DE
BARCELONA



Universitat de Lleida



UNIVERSITAT ROVIRA I VIRGILI



MINISTERIO
DE CIENCIA, INNOVACION
Y UNIVERSIDADES

Presentation

How families and children experience the process when the child protection system removes him/her from his family and takes him/her into care system? What are their needs?

How families and children experience the process of reunification? What are their needs?

How can we support children and families through evidence-based educational support?

Context of the research: child protection intervention

Mother/Father

Foster carers
Children

Child protection team: assess the situation, propose the placement out of home, and follow up with birth parents, planning visits child-parents, further proposals regarding placements or family reunification

Foster care team (ICIF/SIFE): information, recruiting (ICIF), training, evaluating, assigning a child and following up

Intervention beginning

S

Visits and contacts during the placement process

Preparing for the return home

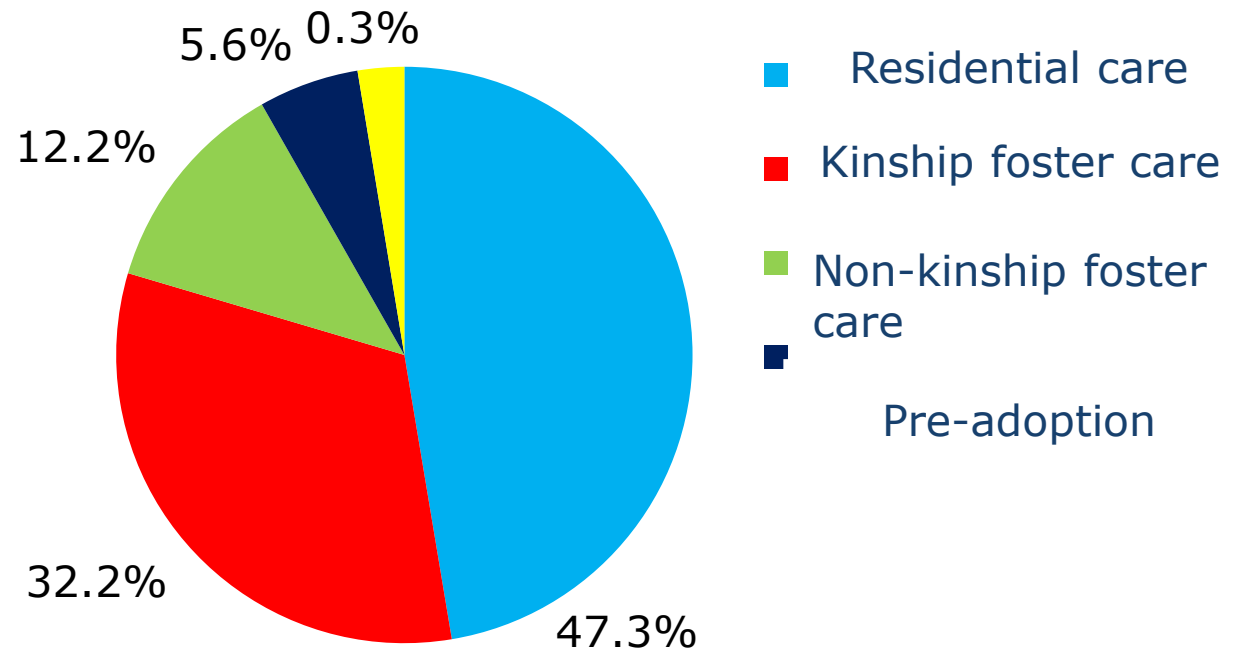
R

Reunification



Context of the research: child protection (Catalonia)

Distribution by type of placement



2018: There were 7,531 children in public care in Catalonia (5.4‰)

Participants in the research

Professionals : 63

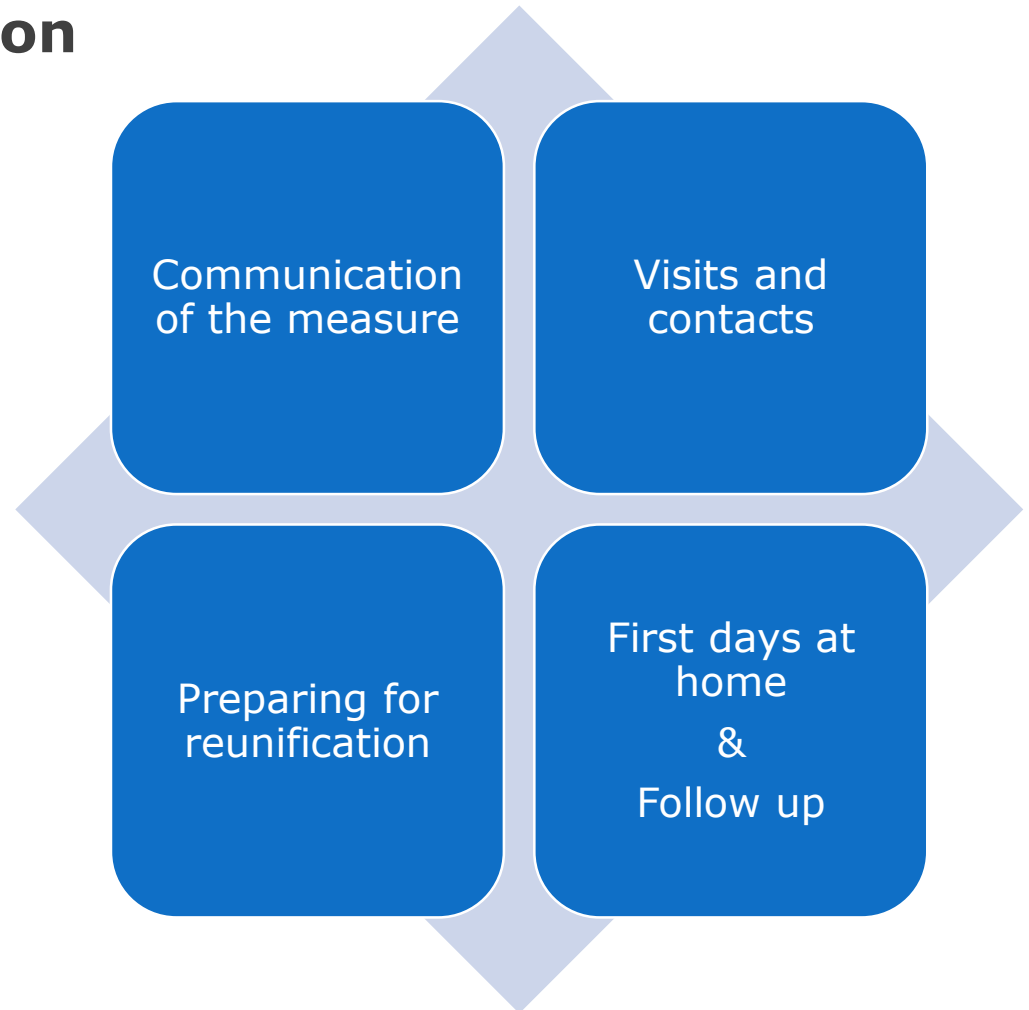
Families: 42

Children &
adolescents: 30

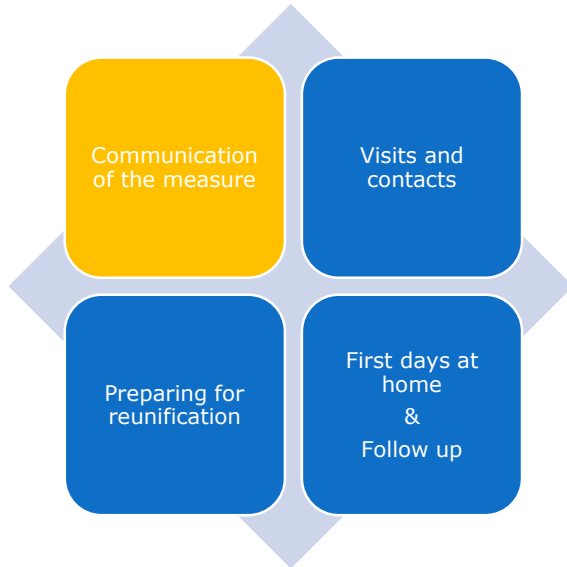


Results

Families and Children's needs across reunification process phases

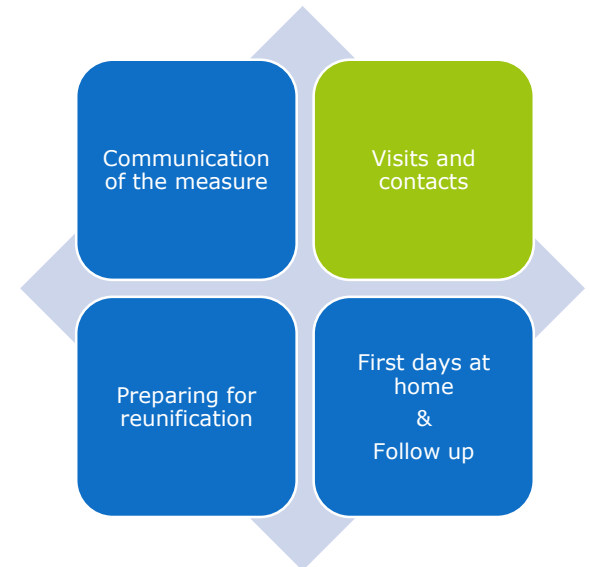


Results: communication of the measure and visits

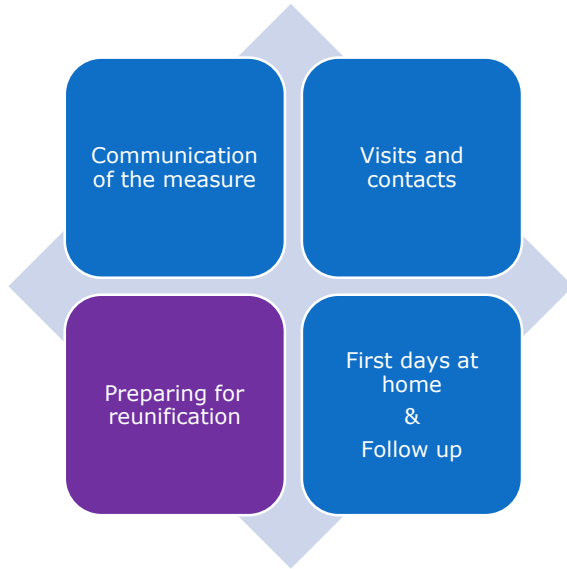


More information about the measure
Understanding the reasons of separation
Awareness of the problem
Motivation to make changes

- Importance of regular contact
- Uneasy feeling created by supervision during the visit
- Providing content visits to improve quality
- Emotional management
- Identity to family cohesion



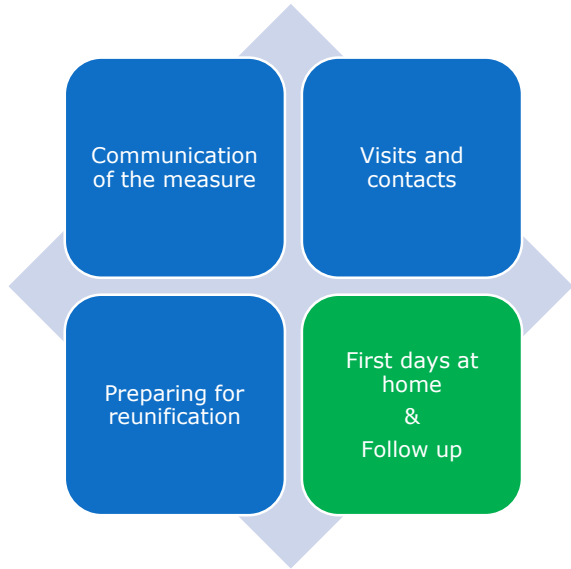
Results: preparing for reunification



- Importance of formal support
- Maintaining dialogue and constant communication between all people involve
- Better support to develop their parenting skills
- Attitude of adjustment, flexibility and confidence
- **Manage expectations and emotions**
- **Being an active part of the process**

"I think both parents and children, need time to prepare ourselves before we get back home again" (Interview with Adolescents)

Results: first days at home and follow up

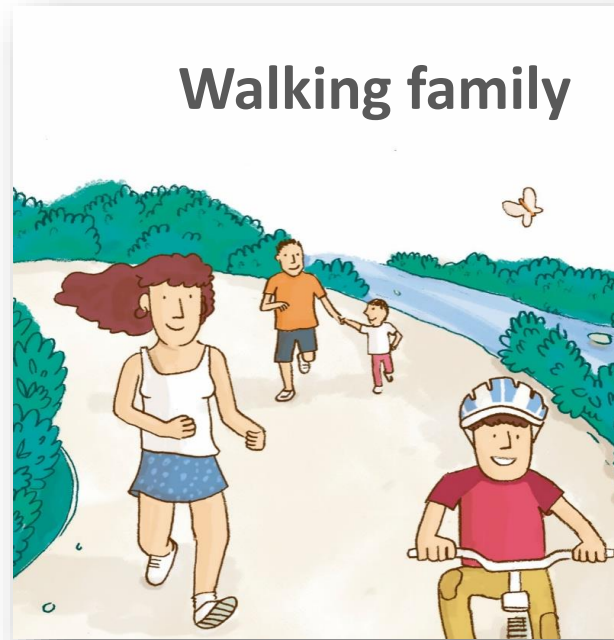


- Formal and informal support that ensures the stability and success of reunification
- Supervision and continuity of intervention
- Managing the challenges presented by reunification:
 - Responsibilities
 - Understanding the evolution of their children and the changes produced during separation
 - **Recognition of the family progress by children**
 - Mixture of different feelings

"I felt strange, the house was smaller, it smelt different, my father was older, everything was very different". (Adolescent interview)

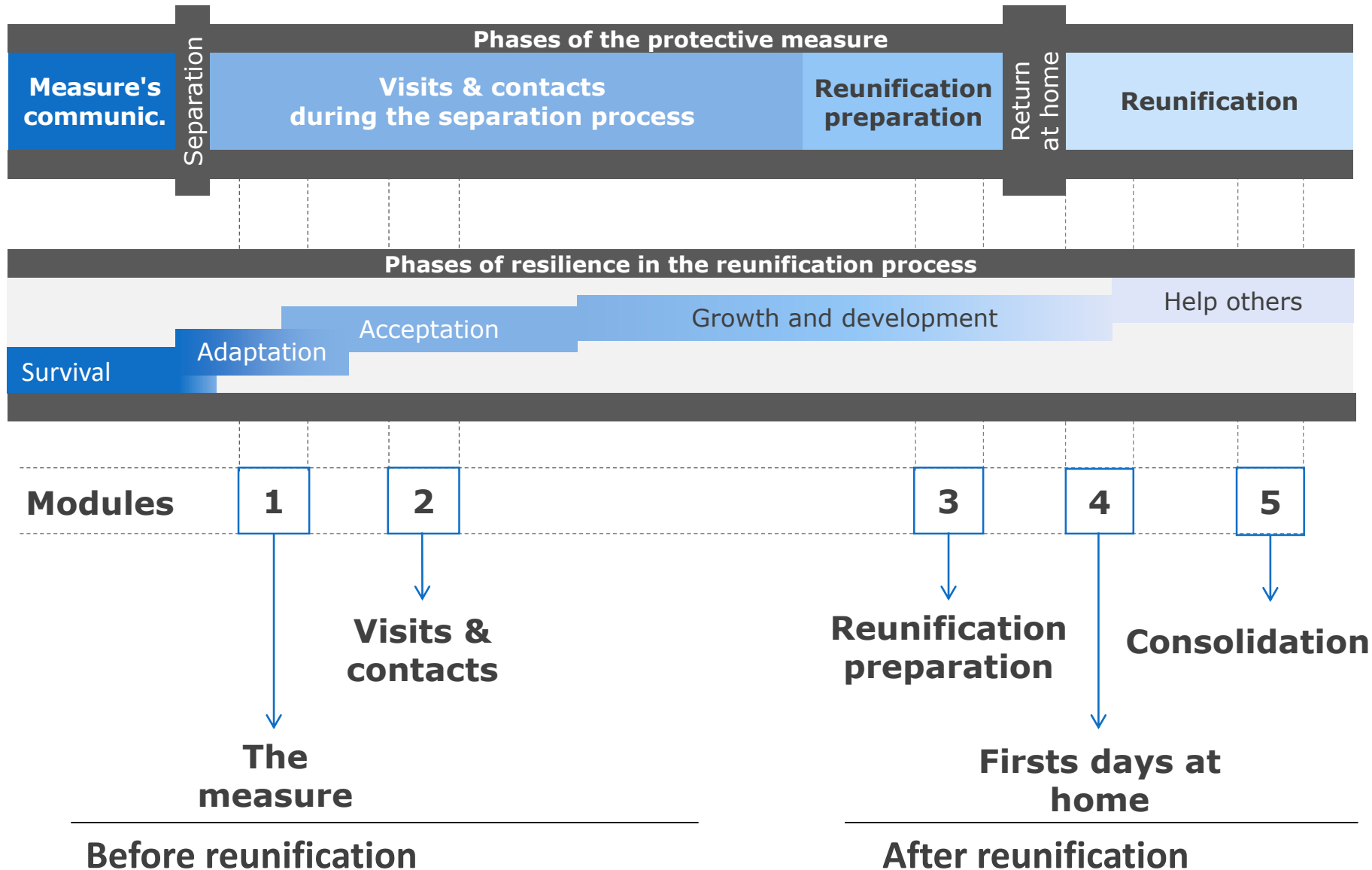
From needs to contents: Walking family program

“Walking Family” is an educational group program of parenting skills for families with members in foster care and for after.



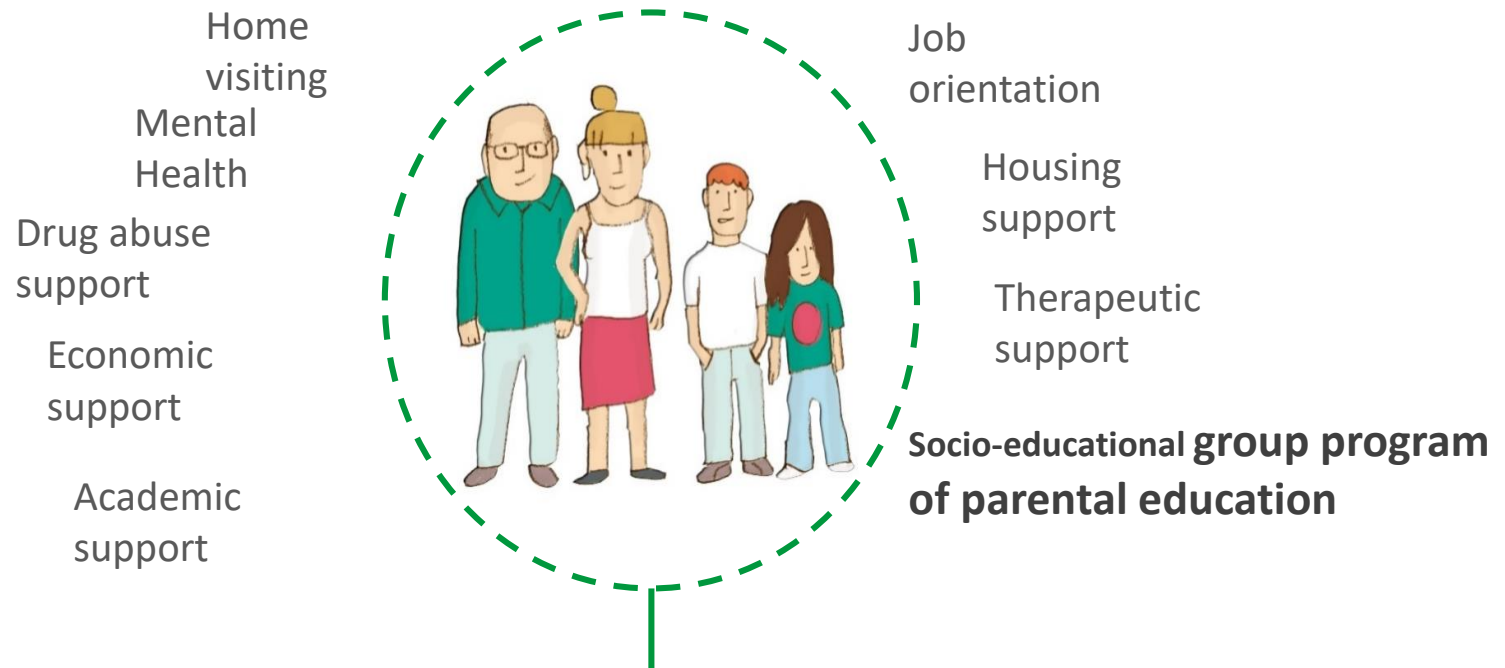
<http://www.ub.edu/ubtv/video/marcher-en-famille>
<http://www.ub.edu/ubtv/video/walking-family>

The program: Structure



To conclude: supporting leaving care

The aim is to help return children to their homes as soon as possible as well as strengthen the reunification once they are home .



Families with sons and daughters between **8 and 16 years** old, with a **prevision of returning home** in their case plan

It is a tool to enable professionals to be able to offer a group resource to families in different stages of their return plans.

Web page

www.caminarenfamilia.com



Programa de competencias parentales durante el acogimiento y la reunificación familiar

Caminar en familia es un programa de apoyo a las competencias parentales específicas que las familias tienen que desarrollar en un proceso de acogida y de reunificación familiar.

Su principal objetivo es promocionar la aceptación y la implicación de la medida de protección para **facilitar el regreso de los hijos e hijas lo más pronto posible al hogar** y afianzar la reunificación una vez están en casa.

<http://www.ub.edu/ubtv/video/marcher-en-famille>

<http://www.ub.edu/ubtv/video/walking-family>

Coordination

M. Àngels Balsells Bailón
Crescencia Pastor Vicente

M. Àngels Balsells Bailón
Crescencia Pastor Vicente
Pere Amorós Martí
Núria Fuentes-Peláez
M. Cruz Molina Garúz
Ainoa Mateos Inchaurreondo
Eduard Vaquero Tió
Carmen Ponce Alifonso
María Isabel Mateo Gomà
Belén Parra Ramajo
Josep M. Torralba Roselló
Anna Mundet Bolós
Aida Urrea Monclús
Anna Ciurana Sala
Alicia Navajas Hurtado
Noelia Vázquez Álvarez

Graphic design

Eduard Vaquero Tió

Audio-visuals

Ainoa Mateos Inchaurreondo
Olga Giralt Figueras
Roger Tous Comas
Xavier Clavero Reluz

Illustrations

Adrià Navarro Sagristà



Grup de Recerca en Intervencions
Socioeducatives en la Infància i la Joventut

Edition

Grupo GRISIJ
*Grupo de Investigación
sobre Intervenciones
Socioeducativas en la
Infancia y la Juventud*

Publisher

Ministerio de Economía y
Competitividad.
Programa desarrollado
en el marco del Proyecto
I+D coordinado EDU2011-
00144-C02-01
"La familia biológica en
el ámbito de la
protección a la infancia:
Procesos de acción
socioeducativa



Future steps

A Socio-educative intervention model to family reunification in the child protection system (RTI2018-099305-B-C21)

Strategies and resources to promote family participation in the development of competencies (RTI2018-099305-B-C2) PI: Balsells, M.A.

Keys for the articulations of socio-educatives programs in the process of foster care and family reunification (RTI2018-099305-B-C22) PI: Fuentes-Peláez, N.